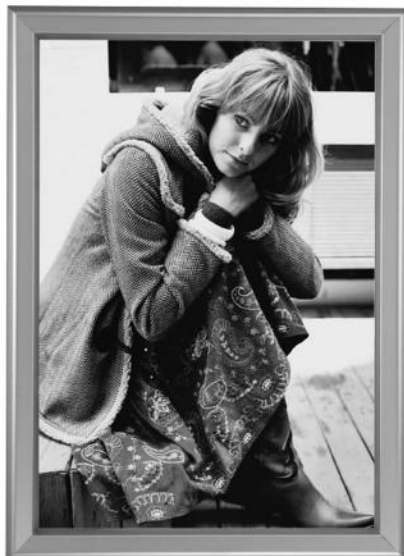


CADRE CLIC-CLAC MURAL DOUBLE-FACE VITRINE

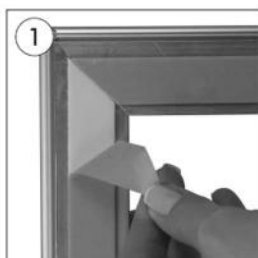
NOTICE DE MONTAGE




Descriptif produit

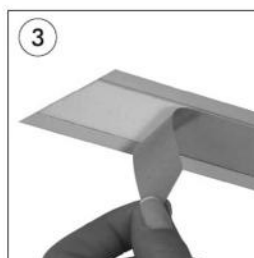
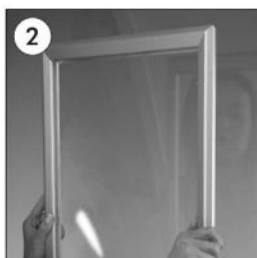
- Cadres en aluminium anodisé naturel avec profilés rabattables et coins angle droit 90°
- Protecteur plexi transparent antireflets
- Cadres extra-plats d'épaisseur hors tout 17 mm, profilé largeur 25 et 35 mm, utilisation sens portrait ou paysage
- Fixation par adhésif double-face (fourni)


ÉTAPES DE MONTAGE




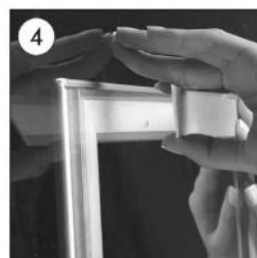
 Retirez la protection jaune sur le pourtour du cadre.


 Take off the yellow protection of the double sided tape along the sides of the frame and post it on the window.



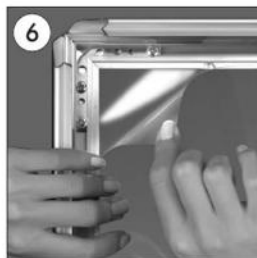
 Retirez la protection jaune sur le pourtour du profilé de décoration.

 Take off the yellow protection of the double sided tape along the decorative backing profiles. Post these bars on the other side of the window.



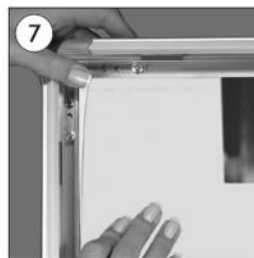
 Ouvrez tous les profilés.

 Open all profiles.




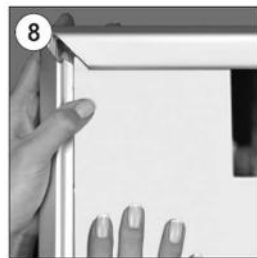
 Retirez la protection anti-reflets en plexiglass


 Take-off the anti-reflex cover.




 Placez l'affiche.

 Place the poster in.



 Après avoir replacé la protection sur l'affiche, fermez les profilés.

 After placing the cover back on the poster, close the profiles.